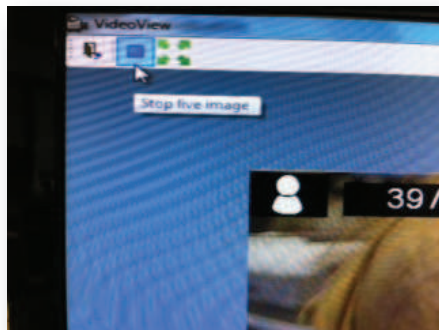
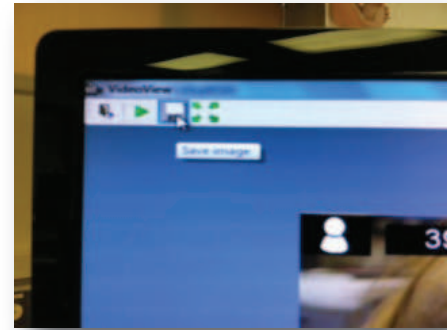


1 SAVING IMAGES

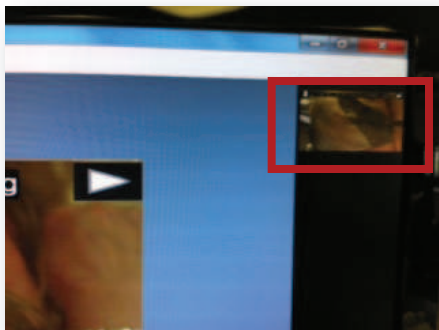
- 1 Once you have obtained your desired image using the Horus Scope, see the instructions below to save the images to folders within the Medical EDA software.
- 2 Instructions are also provided to export the images.



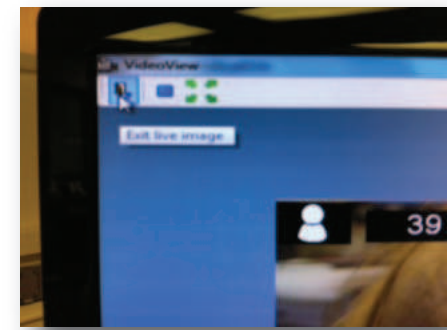
3 Stop Live Image



4 Save Image



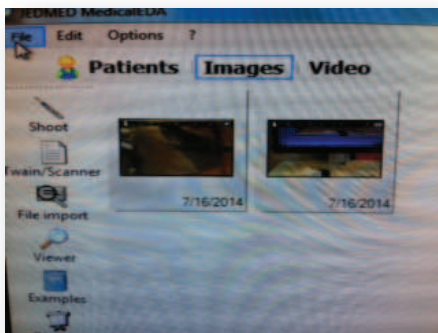
5 Saved Image(s) are added to the right side of the 'Live Image' screen



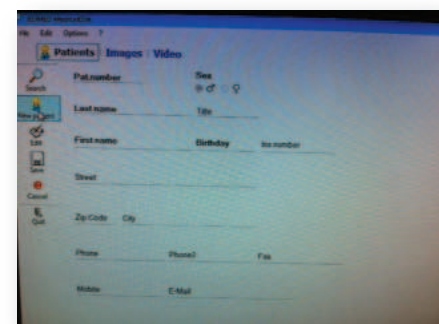
6 Exit 'Live Image'



2 RETRIEVE SAVED IMAGES



7 When you exit Live Images, you are taken to the screen with 'All Saved Images'.
To Export images, click File, Export and choose external memory



8 Open Saved Patient Data
 a.) Click on Patients tab.
 b.) Double-click Search icon.
 c.) Search for patient.
 d.) Click 'Apply'.